



AUTOMOBILE AND THE CITY

Paris cca 1910

4262. PARIS — Place et Avenue de l'Opéra

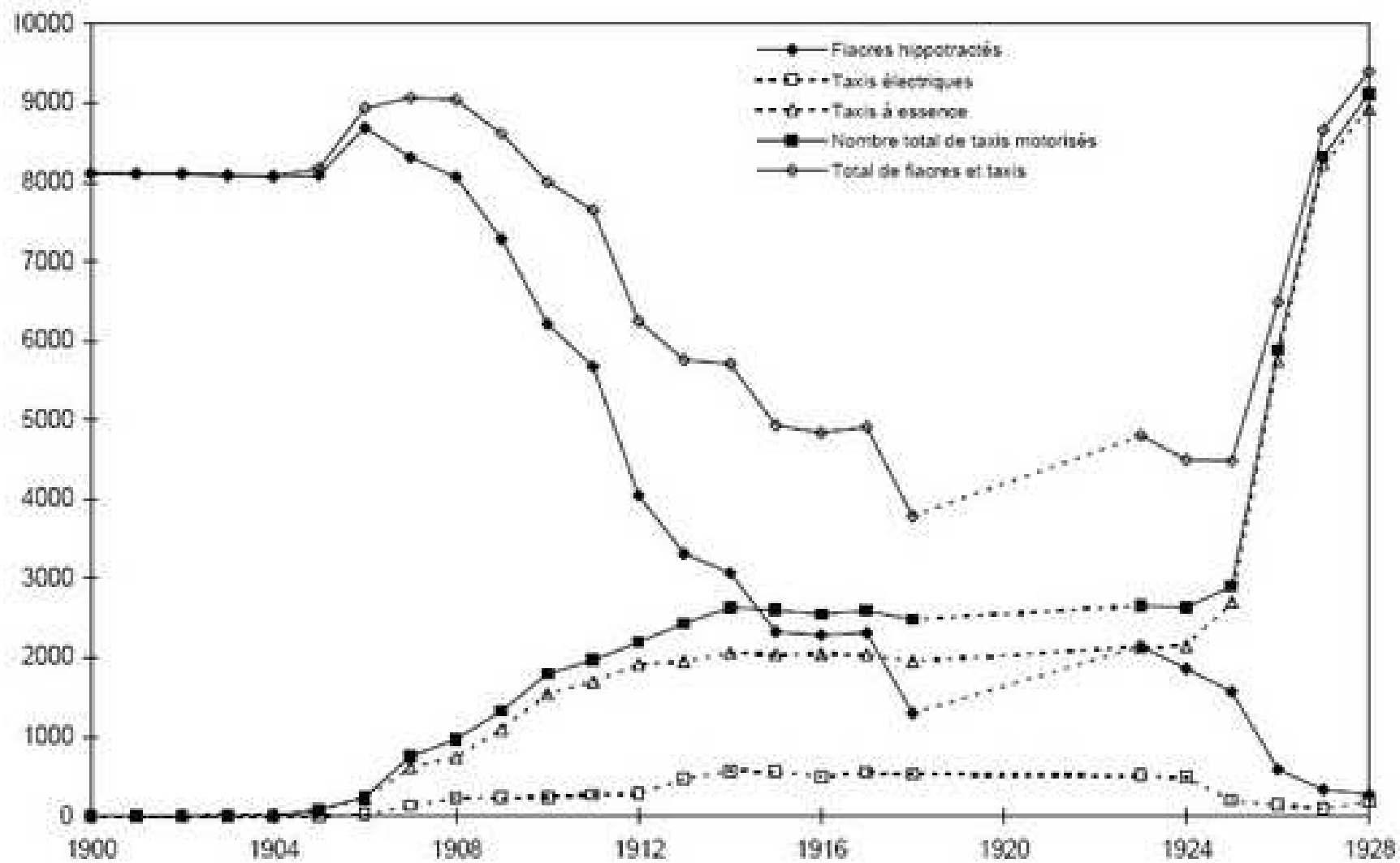


© Arama - Dom

Paris La Villette cca 1910



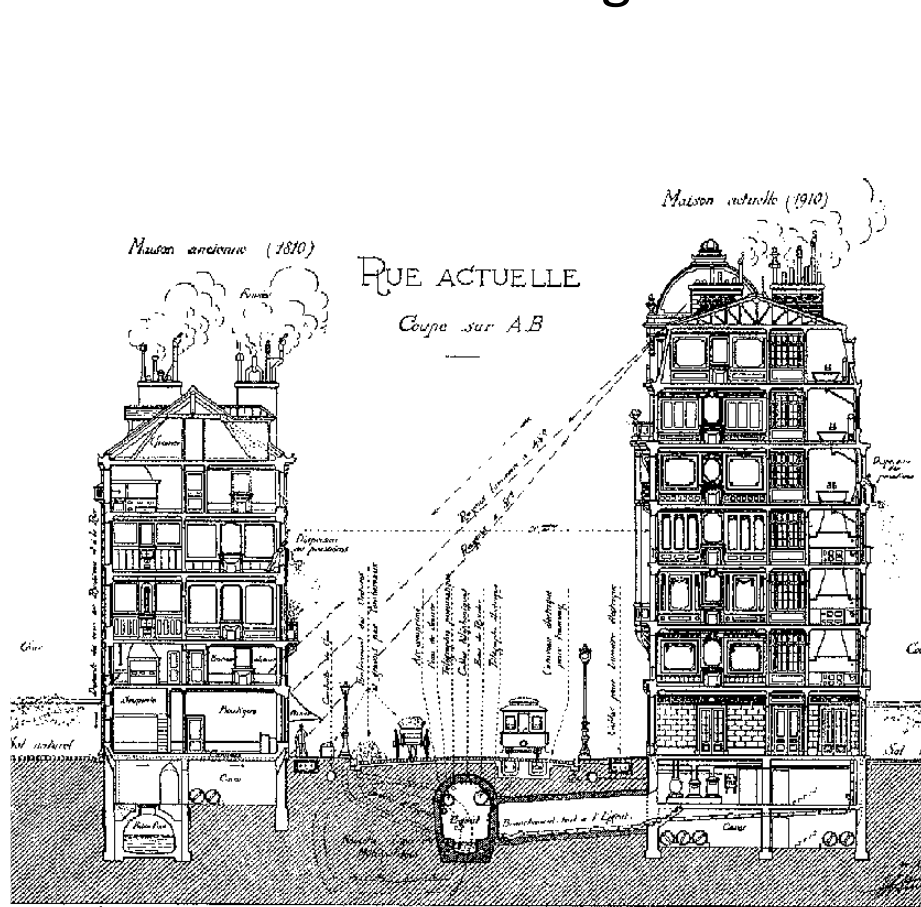
1645 PARIS (XIX^e). — Le Rond-Point de la Villette. — Le Métro. — LL.



Hénardovy návrhy průtahů do centra 1903-1909



Eugène Hénard 1849-1923



Plan du sous-sol

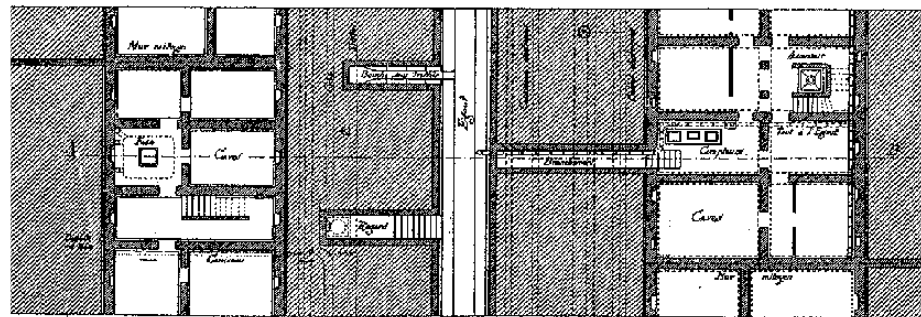
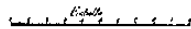
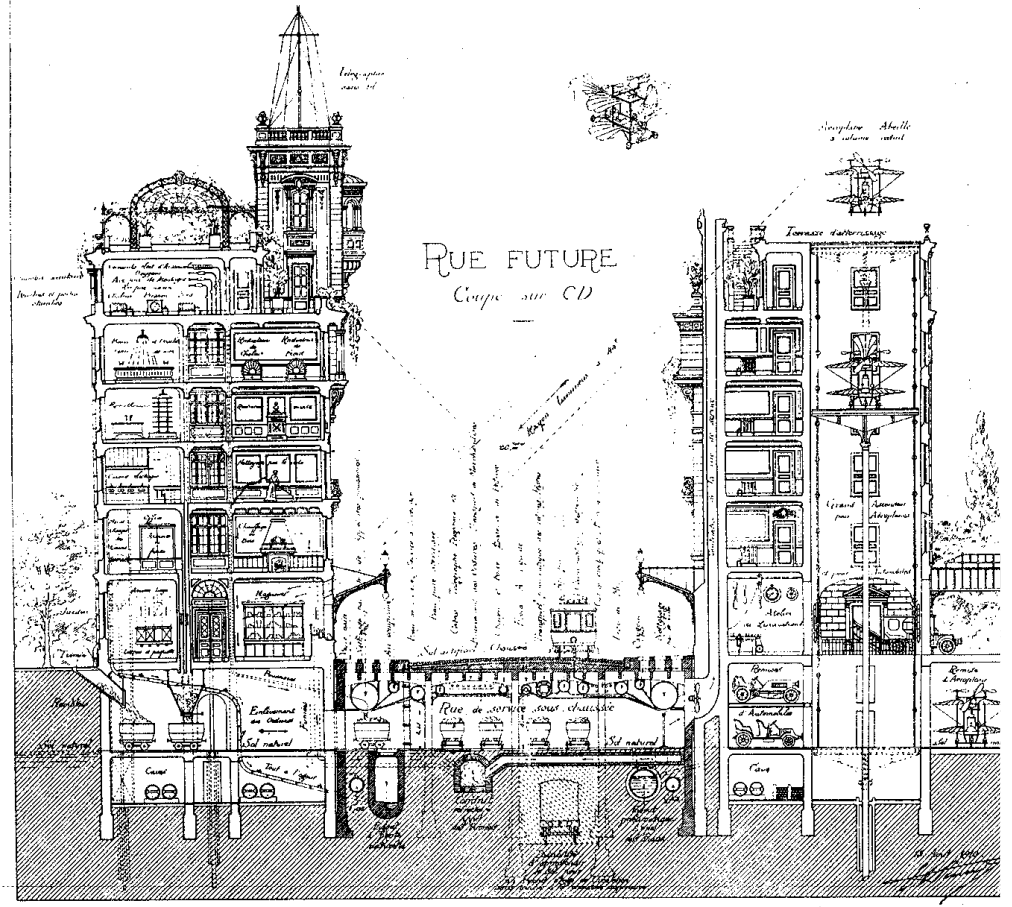


FIG. 1.



Plan de la Rue de service sous chaussée

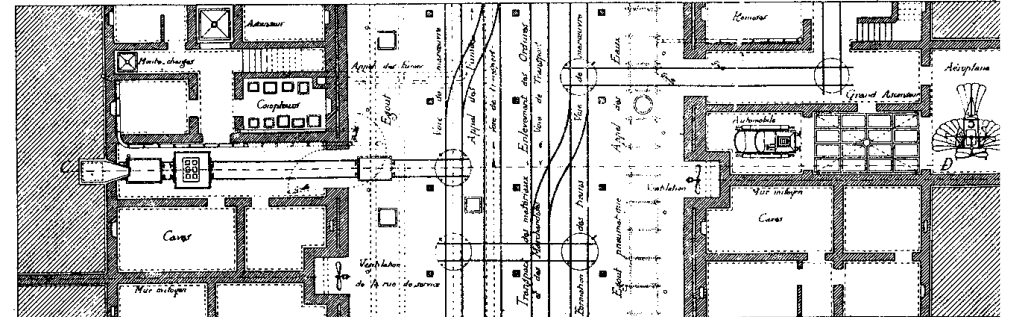
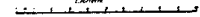


FIG. 2.

Paříž měla v roce 1910 celkem 54,000 automobilů

*Schéma
d'une voie de grande circulation
à étages multiples*

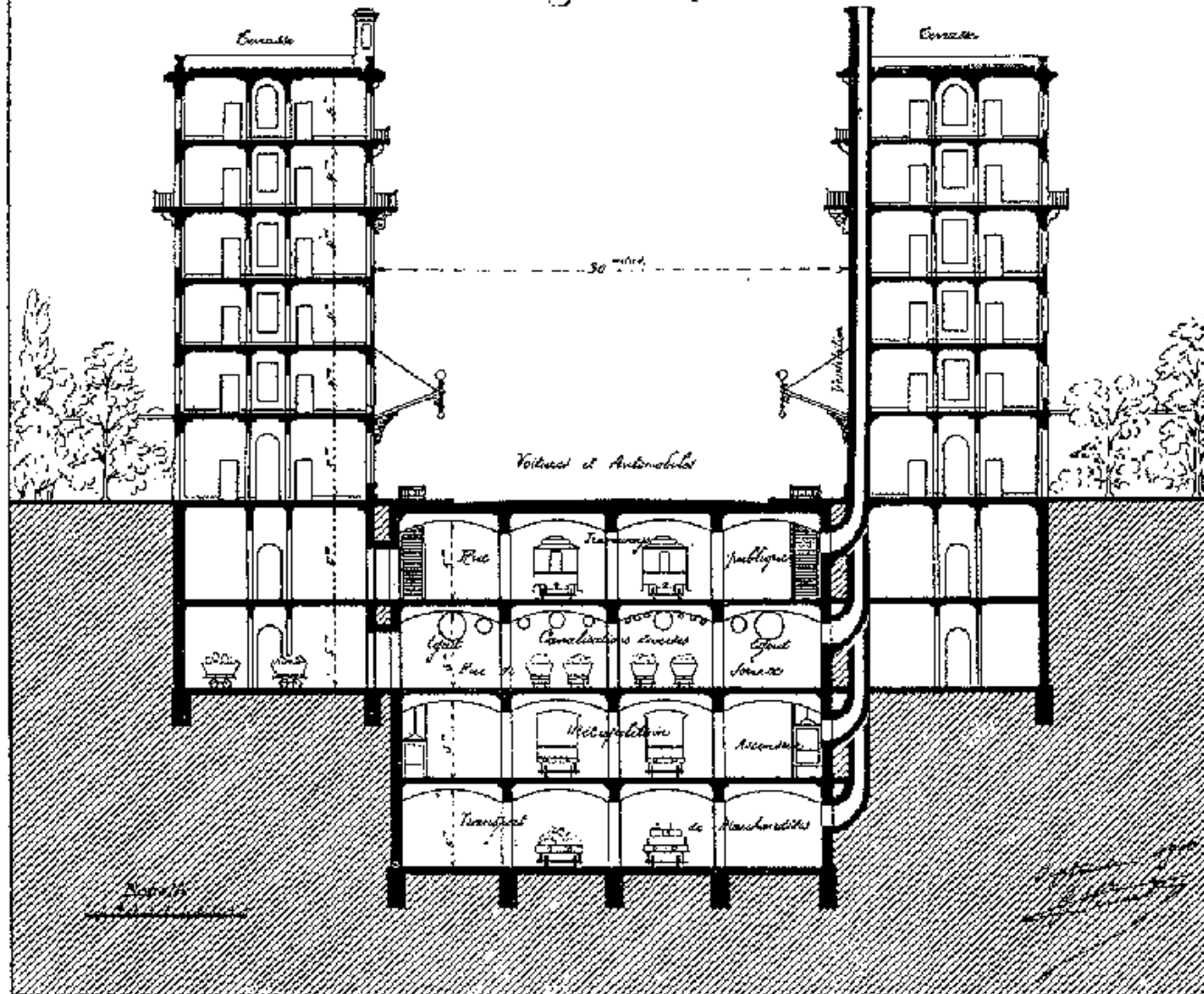


FIG. 3.

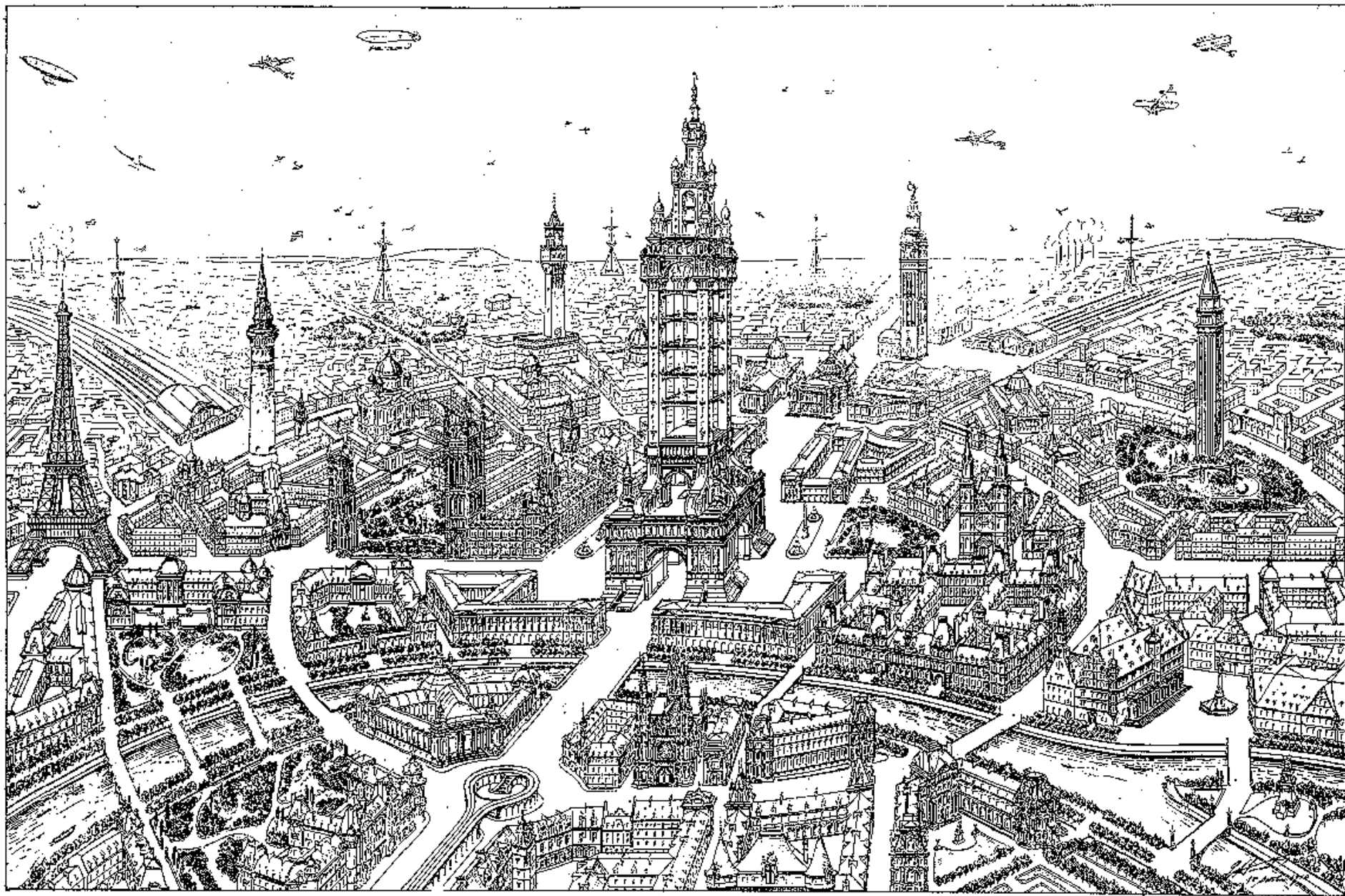
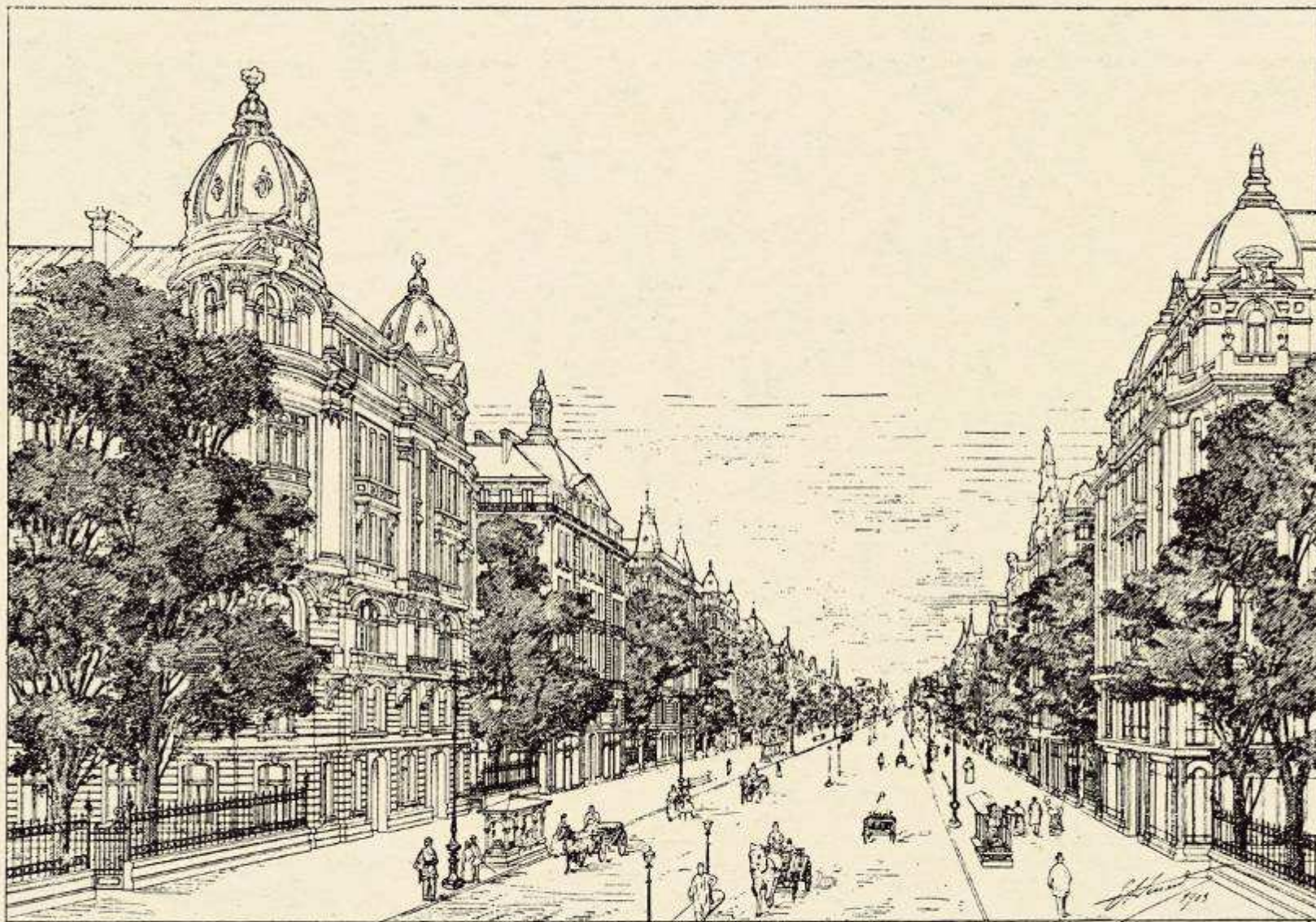
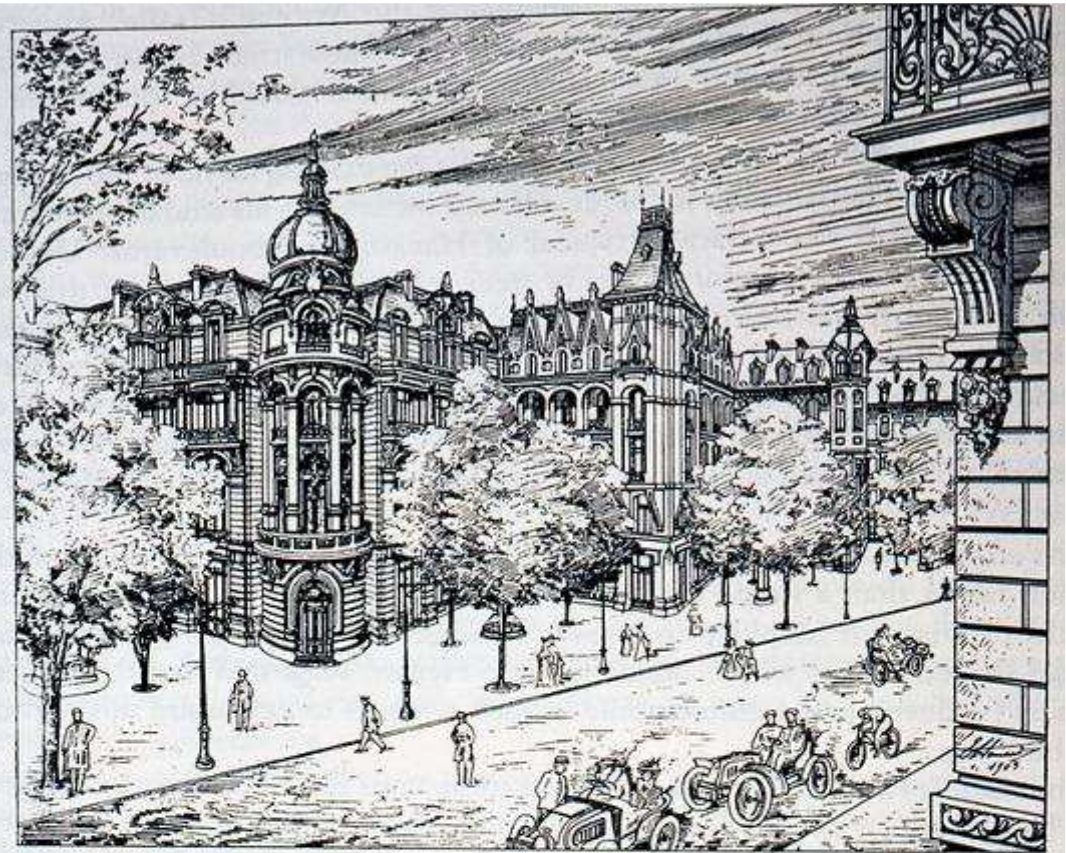
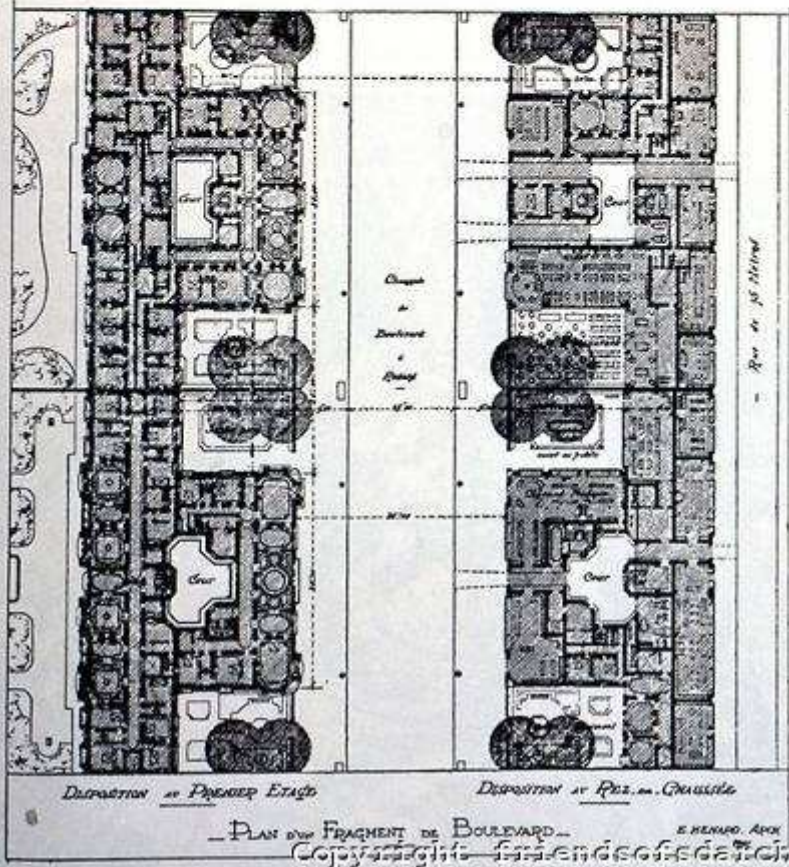
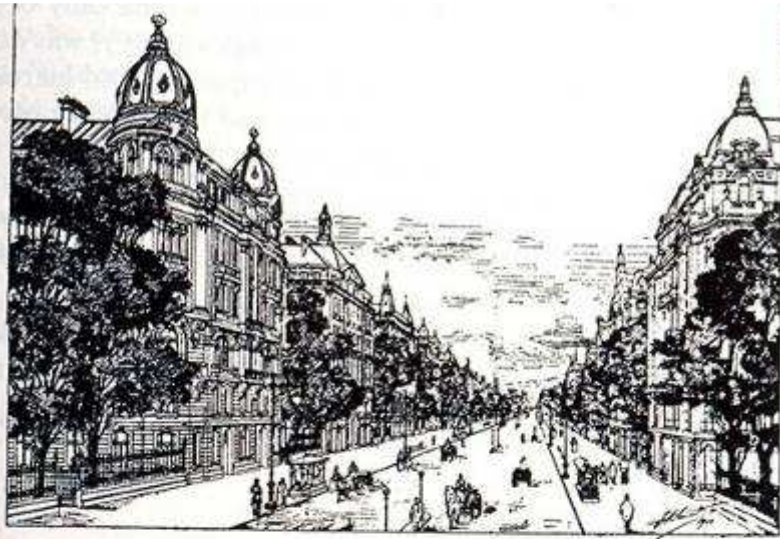


FIG. 4.—UNE VILLE DE L'AVENIR: VUE A VOL D'AEROPLANE.



NOUVEAU TYPE DE BOULEVARD A REDANS
ALTERNANCE DES ARBRES ET DES MAISONS



VUE PERSPECTIVE DU BOULEVARD A PEDANS TRIANGULAIRES

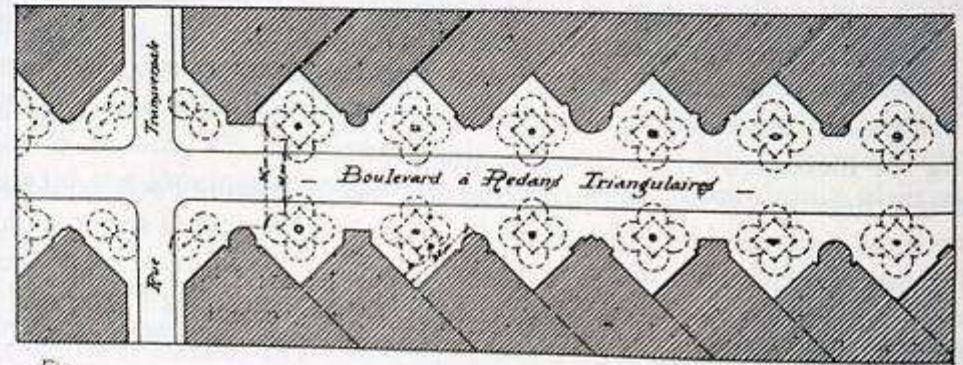
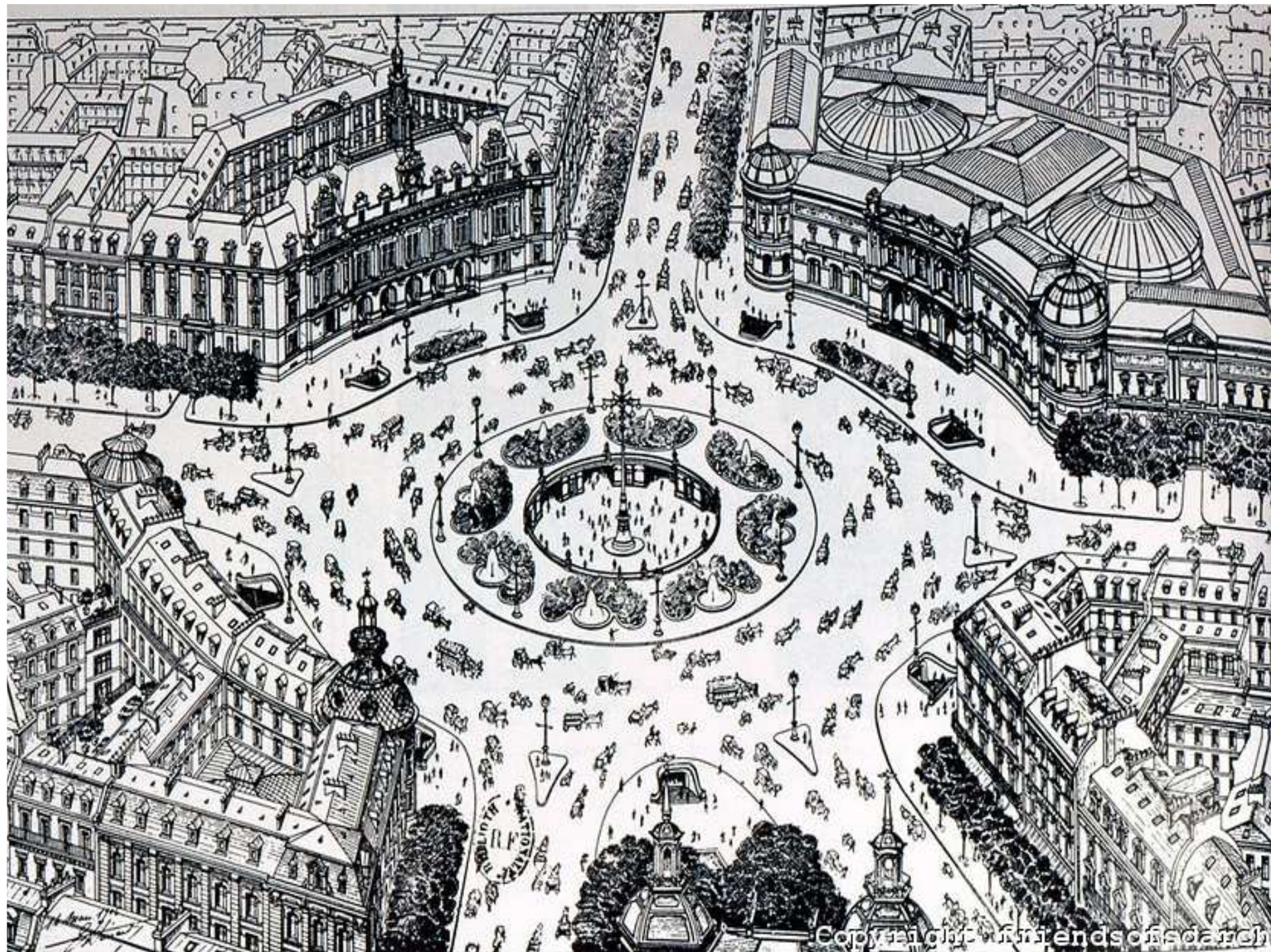


Fig.

PLAN D'UN FRAGMENT DE BOULEVARD



1900 - 1920

- 1896 first automobile manufacture
- 1900 steering wheel
- **1901 first statewide traffic laws**
- **Oil prices go down: gasoline-powered automobile becomes more economical than electric powered automobiles**
- **1906 maximum speed limits at 8 miles per hour**
- 1906 first limited access motorways: the Long Island Motor Parkway and the Bronx River Parkway
- **1910 first drunk driving laws**
- 1913 Model T moving assembly line, first drive-in gas station
- 1914 the beginning of crash testing
- 1919 first gasoline tax

Bridge of Tomorrow



New York World's Fair 1939

1920-1960

- 1921 first drive-in restaurant
- 1922 first suburban shopping center, first specially designed police car
- 1923 first paved roadway from New York to San Francisco: the Lincoln Highway; Hertz the first national car rental agency
- 1924 first radios for cars
- 1925 motels begin lining roadways.
- 1926 antifreeze created to allow drive year round.
- 1933 first drive-in movie theater.
- 1937 automatic transmission
- 1939 auto air conditioning
- 1940 four-wheel drive all-purpose automobile: Jeep
- 1946 drive-through bank teller windows.
- 1948 first roadside fast-food restaurant: McDonald's.
- 1949 first prefabricated suburban community: Levittown.
- 1950 first mass-production compact car: the Rambler
- 1956 Interstate Highway Act creates super highway network

1960-2000

- **1960 first auto emissions law**
- **1962 first safety law, child car seat with safety belt**
- **1965 Motor Vehicle Air Pollution Act reduces auto emissions**
- **1967 Air Quality Act sets clean-air standards**
- **1974 air bags**
- **1975 catalytic converter becomes a standard**
- **1982 Mothers Against Drunk Driving formed**
- **1984 first safety belt law**
- **1991 anti-lock brakes - ABS**
- **1995 Global Positioning System - GPS**
- **1996 zero-emission electric vehicles re-introduced**







from space for people to space for cars

1938 Alker Tripp: road hierarchy

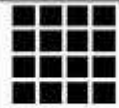




**1944 Patrick Abercrombie: County of London Plan
/ the "Abercrombie Plan" for Greater London /**

1944 County of London Plan



Radburnský uliční systém 1929

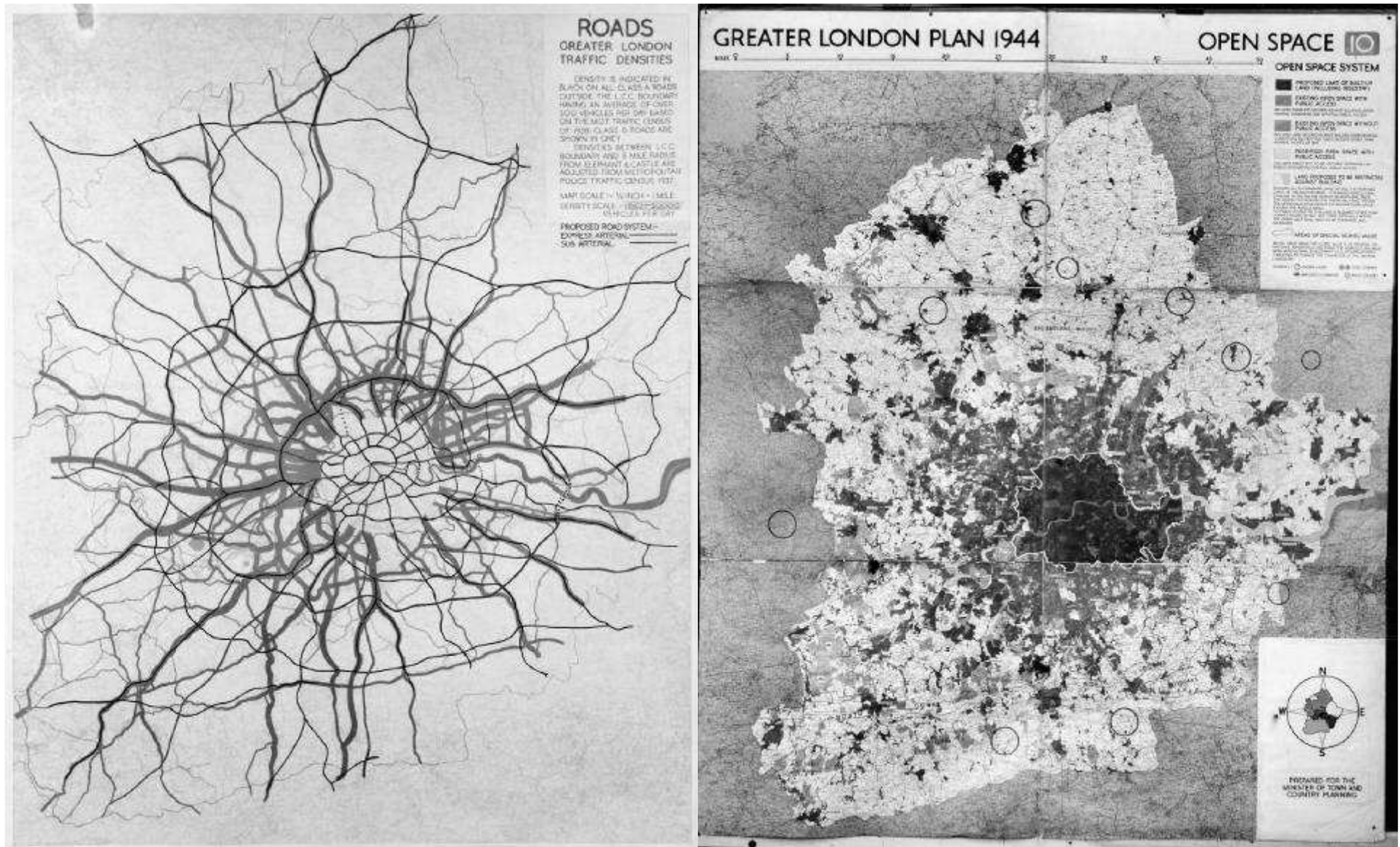
důsledná segregace komunikací pro pěší a komunikací pro automobily

					
	Square Grid. (Vilnius, Houston, Portland etc.)	Oblong grid. (most cities with a grid)	Oblong grid 2 (some cities, or in certain areas)	Loops. (Subdivisions - 1950 to now)	Cul-de-sacs. (Radburn, 1932 to now)
Percent of area for streets	36.0%	35.0%	31.4%	27.4%	23.7%
Percent of buildable area	64%	65%	68.6%	72.6%	76.3%

"a town for the motor age"



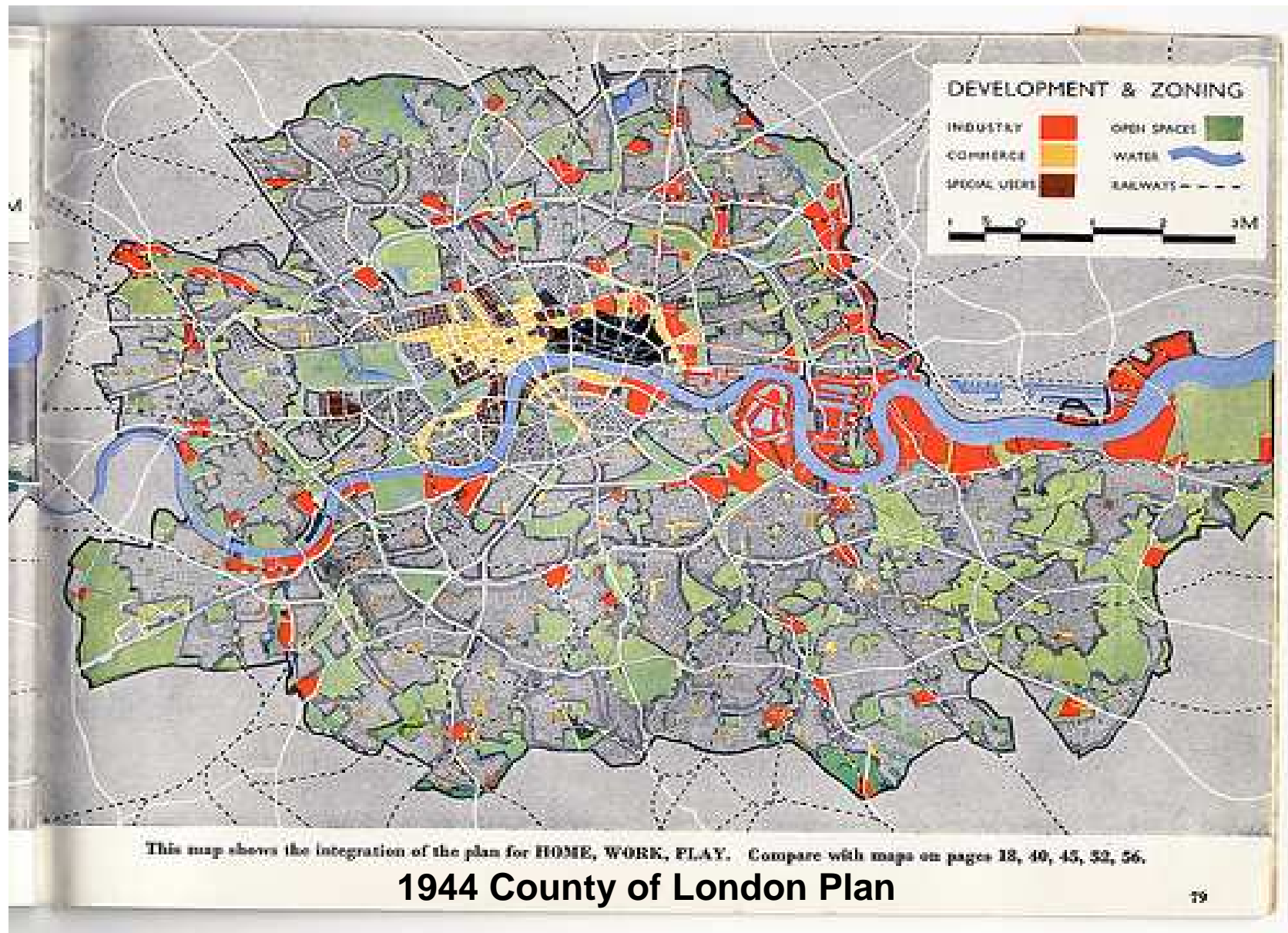
Regionální plán



1944 County of London Plan



Funkční plán



Kolín nad Rýnem 1945



Newcastle upon Tyne, UK, before WWII



Newcastle upon Tyne, UK, plan 1945

